



COVID-19: PUBLIC HEALTH CONSIDERATIONS FOR RE-OPENING MAINE

DR. NIRAV SHAH

APRIL 28, 2020

Proposed Maine Gating Criteria – Summary

REDUCTION OF COVID-19 SYMPTOMS

- Downward trajectory of influenza-like illnesses (ILI)
- Downward trajectory of COVID-like syndromic cases

DECREASE IN COVID-19 CASES

- Downward trajectory of documented cases
- Downward trajectory of newly hospitalized patients

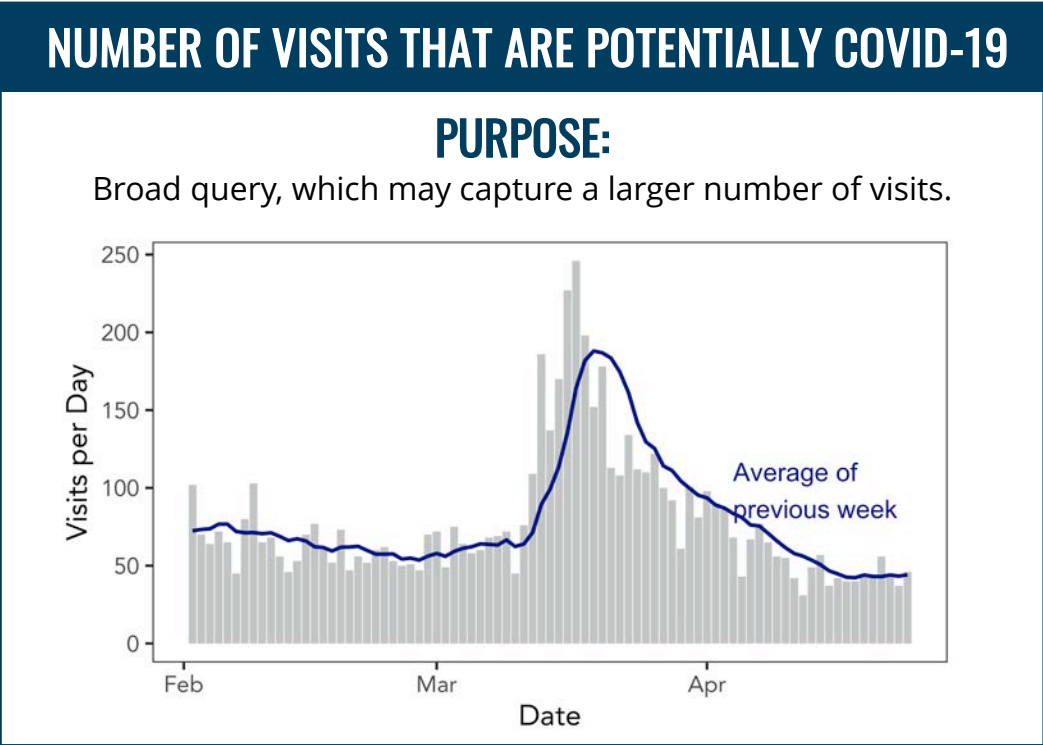
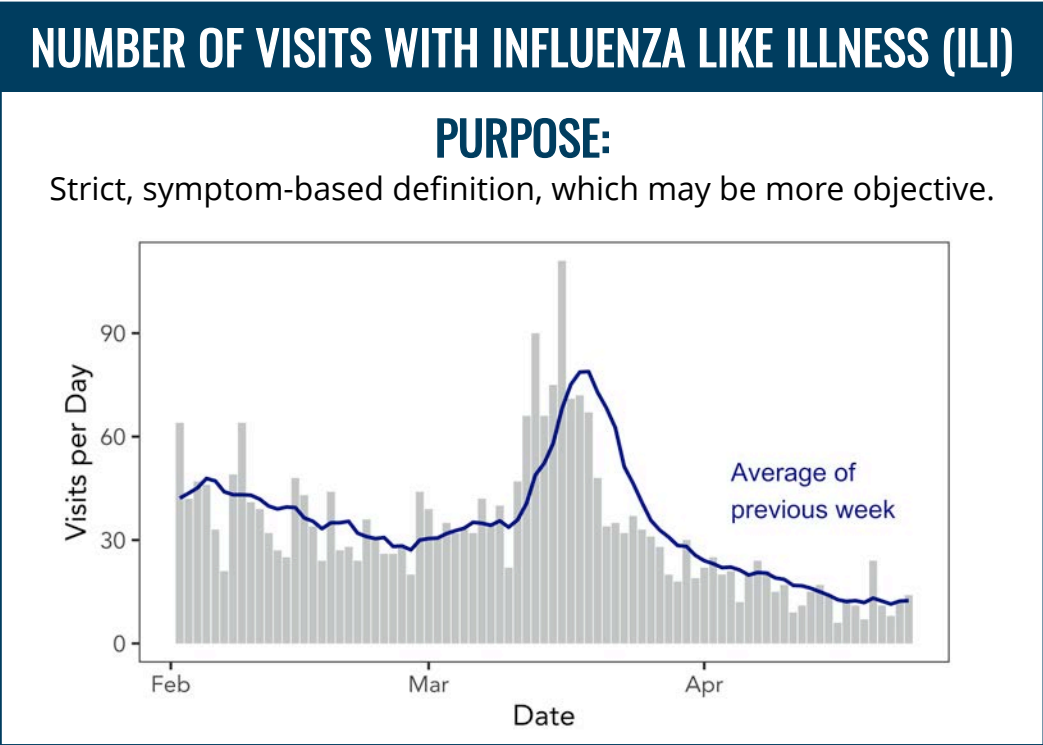
HEALTH SYSTEM PREPAREDNESS

- Treat all patients without crisis care
- Robust testing program in place for at-risk health care workers, including emerging antibody testing

Maine Recommendations for Gating Criteria - Symptoms

OBJECTIVE:

Measure the burden of symptoms of COVID-19-like illness to capture patients who may have COVID-19, even if they were not tested.



1 Definition: Fever AND (Cough OR Short of Breath) 2 Definition: Fever OR Cough OR Short of Breath OR Viral infection OR COVID/Coronavirus mentioned

Maine Recommendations for Gating Criteria - Cases

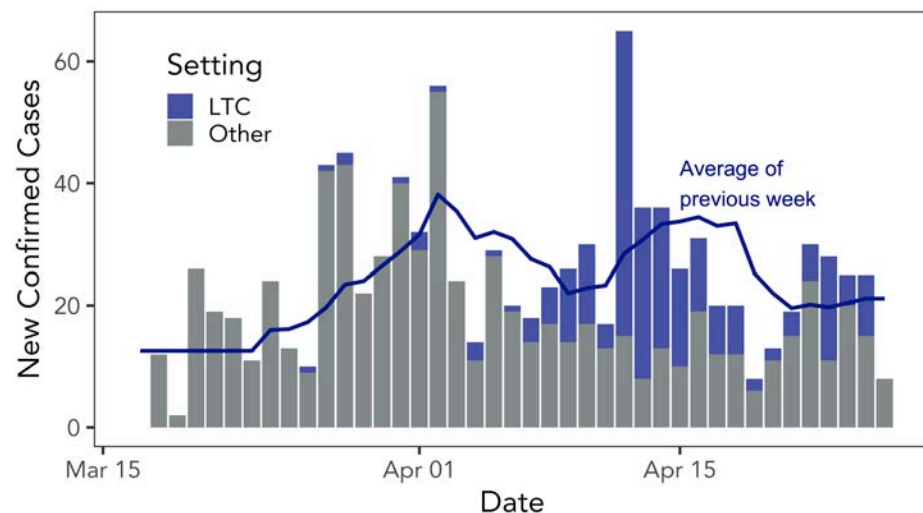
OBJECTIVE:

Measure the burden of confirmed COVID-19 cases—both in number and severity—focusing on severe disease that may result in high health care utilization

NUMBER NEW COVID-19 CASES

PURPOSE:

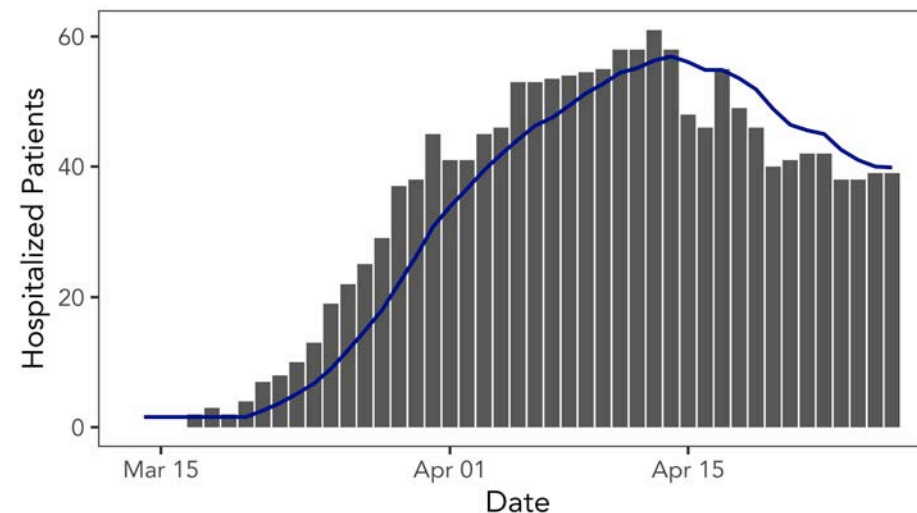
Measure the incidence of new COVID-19 cases.



NUMBER OF PATIENTS HOSPITALIZED FOR COVID-19

PURPOSE:

Measure the burden of severe COVID-19 disease.



Maine Recommendations for Gating Criteria - Hospitals

OBJECTIVE:

Ensure adequate health care resources are available to protect health care workers and patients in the event of a new outbreak.

CRITERION: TREAT ALL PATIENTS WITHOUT CRISIS CARE

PURPOSE:

Ensure adequate hospital capacity if the number of cases rise.

Resource	COVID-19 Occupied ¹	Available ¹
ICU Beds	16	167 (+193)
Ventilators	7	307 (+394)
Non-ICU Beds	23	967

CRITERION: ROBUST TESTING PROGRAM IN PLACE FOR AT-RISK HEALTH CARE WORKERS

PURPOSE:

Ensure healthcare workers are tested to protect patients and health care workers.

HEALTH CARE WORKERS ARE CURRENTLY:

- In the top tier for COVID-19 testing and,
- Are able to receive tests promptly after exposure or symptom onset

¹ Available Number reported on Maine CDC survey of hospitals 4/27/2020 + Known current surge capacity

Additional Public Health Measures

EXPAND TESTING

- Widespread testing—especially in congregate settings—allows high-risk settings to prevent and manage outbreaks
- Expand testing among public and private labs
- Determine role of antibody testing in allowing individuals to return to work or social activity

EXPAND CONTACT TRACING

- Contact tracing allows for contacts of confirmed cases to be identified and properly quarantined to limit spread
- Maine CDC will engage additional individuals to perform contact tracing and outbreak investigation

ENSURE HOSPITAL PREPAREDNESS

- Maine CDC has distributed more than 600,000 pieces of PPE and will continue to do so, with a current focus on congregate settings
- Maintain ability to surge health care system capacity if cases rebound



RESTARTING MAINE'S ECONOMY

GOVERNOR JANET MILLS

APRIL 28, 2020

STAY SAFER AT HOME: EXTENDING MAINE'S STAY AT HOME ORDER

The new stay at home order, which will be issued by Thursday, will continue to have Maine people stay at home with limited exceptions for already permitted activities, such as grocery shopping or exercising.

However, the new Stay Safer at Home Order will also allow Maine people to visit businesses or participate in activities that are deemed safe to open under the reopening plan.

The Order will extend through May 31, 2020 but is subject to change.

GRADUALLY AND SAFELY RESTARTING MAINE'S ECONOMY

- The gradual reopening plan builds on current Executive Orders, which allow for the operation of grocery stores, pharmacies, financial institutions, home repair services, and car repair services, among others, and then establishes four stages focused on resuming business operations and activities not currently operating that can be conducted safely.
- Focuses not on whether business has been deemed essential or non-essential by the federal government, but on whether a business or activity can restart, even in a limited way, while protecting public safety.

ESTABLISHING SAFETY PRECAUTIONS

- Businesses must work with the Department of Economic and Community Development to develop practical, reasonable, evidence-informed safety protocols and modifications that protect the health and safety of employees and customers.
- This collaboration will produce “COVID-19 Prevention Checklist identifying best practices to protect Maine people.
- Once completed, businesses that commit to complying with the requirements on the checklist will be provided a badge to post on their business door or website, their names will also be posted on the DECD website and they will be allowed to open.

STAGE 1

- Beginning on May 1st, limited expansion of certain business, religious, and quality of life activities, with appropriate safety precautions. These include:
 - Health care from Maine licensed providers
 - Personal services: Barber shops, hair salons, and pet grooming
 - Limited drive-in, stay-in-your-vehicle church services
 - Drive-in movie theaters
 - Outdoor recreation: guided outdoor activities (hunting & fishing) and restricted use of golf and disc golf courses
 - State parks, state owned public land trails, and historic sites; although certain coastal state parks will remain closed
 - Auto dealerships and car washes

STAGE 2

- Tentatively beginning on June 1st, Stage 2 would allow for some degree of opening with reservations, capacity limits, and other protective measures for:
 - Restaurants
 - Fitness and exercise centers and nail technicians
 - Retail stores for broader in-store shopping
 - Coastal State parks

STAGE 3

- Tentatively beginning July 1st, Stage 3 would allow for some degree of opening for:
 - Lodging, such as hotels, campgrounds, summer camps, or RV parks for Maine residents and visitors. The Administration is developing guidelines to assist them in safely reopening, and reservations should not be taken until those guidelines are issued.
 - Outdoor recreation such as charter boats and boat excursions
 - Bars
 - Personal services such as spas, tattoo and piercing parlors, and massage facilities, among others

STAGE 4

Time is undetermined but would allow for all businesses and activities to resume with appropriate safety precautions.

Stay Safe. Stay Vigilant. We will get through this together.



STATE OF MAINE

Covid-19 Response
Office of the Governor



RESTARTING MAINE'S ECONOMY | 15